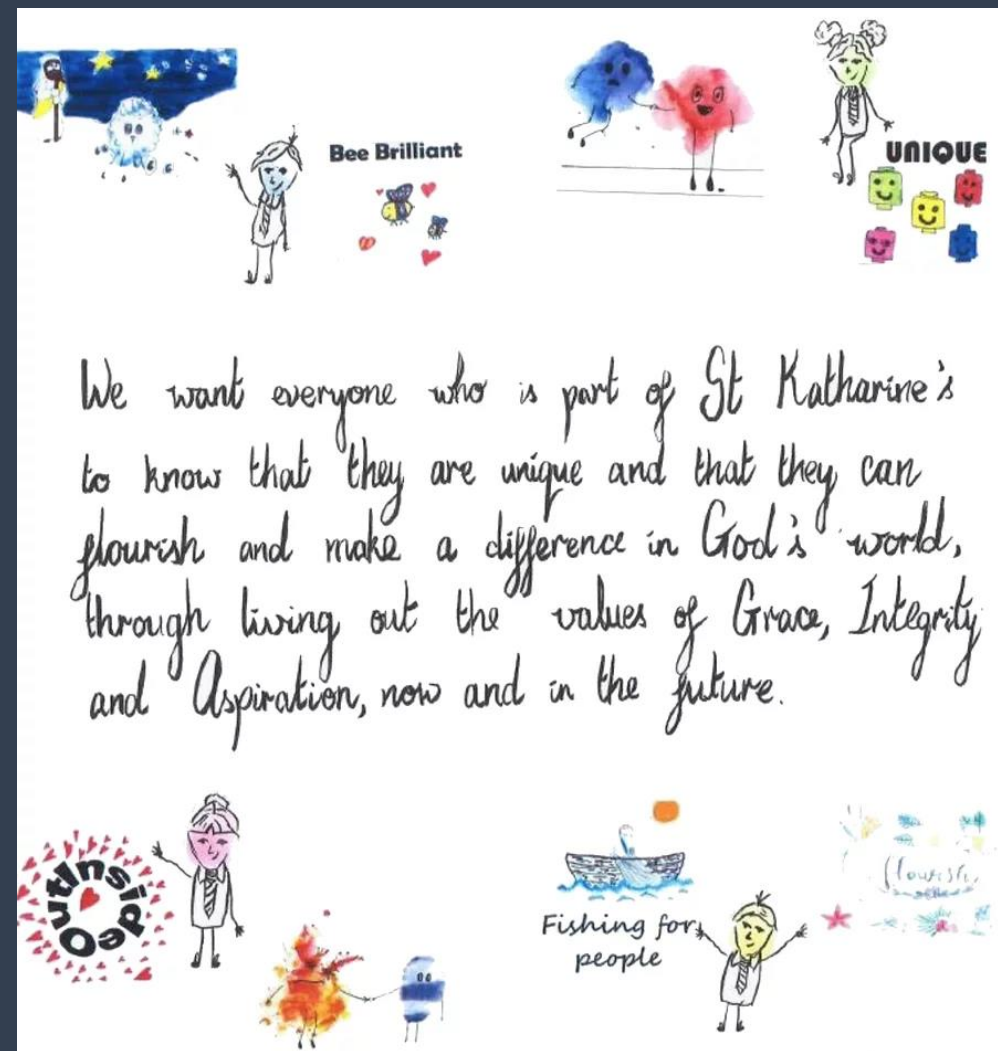




# September 2024 Parent Meeting

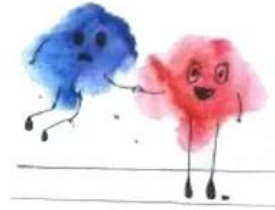
A brief overview of the following:

- Vision & 'Keep on Moving'
- Anti-racism
- Inclusion Team
- Physical Literacy
- Home Learning
- Positive Partnership
- Attendance
- FSK





Bee Brilliant



UNIQUE



We want everyone who is part of St Katharine's to know that they are unique and that they can flourish and make a difference in God's world, through living out the values of Grace, Integrity and Aspiration, now and in the future.



Fishing for people





2024-25

# Keep on Moving





# An anti-racist school



- A school which is not simply passively non-racist but actively anti-racist.
- They recognise that educating all children about racism is a matter of social justice and will take an anti-racist approach to all aspects of school life.

# Inclusion Team

Deputy Head/DSL/  
Attendance

Mrs Burton

Assistant Head/EY/  
English/DSL

Mrs Pollard

Curriculum Leads

Miss Wilcox and Miss Dennett

Maths Lead

Mrs Gadd

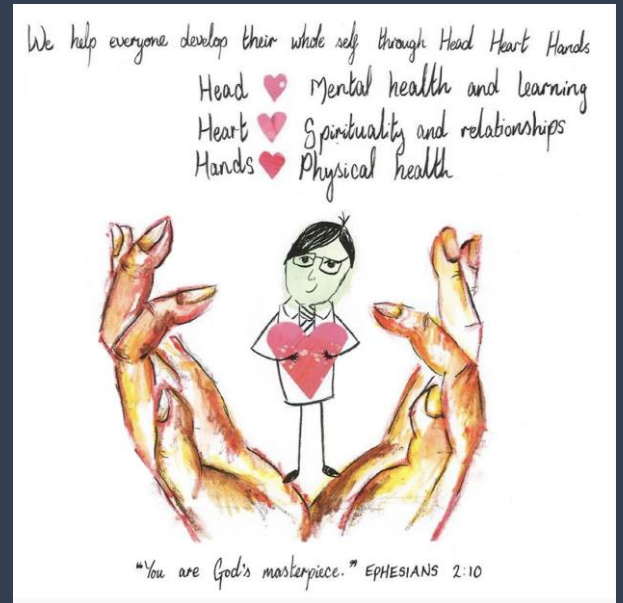
SENCO/DDSL

Mrs Foyle

Headteacher/DDSL

Mrs St John

The classteacher is always your first contact.



There is  
deep,  
tangible and  
proper  
inclusion in  
this school.

# Physical Literacy

**only**  
**47%**



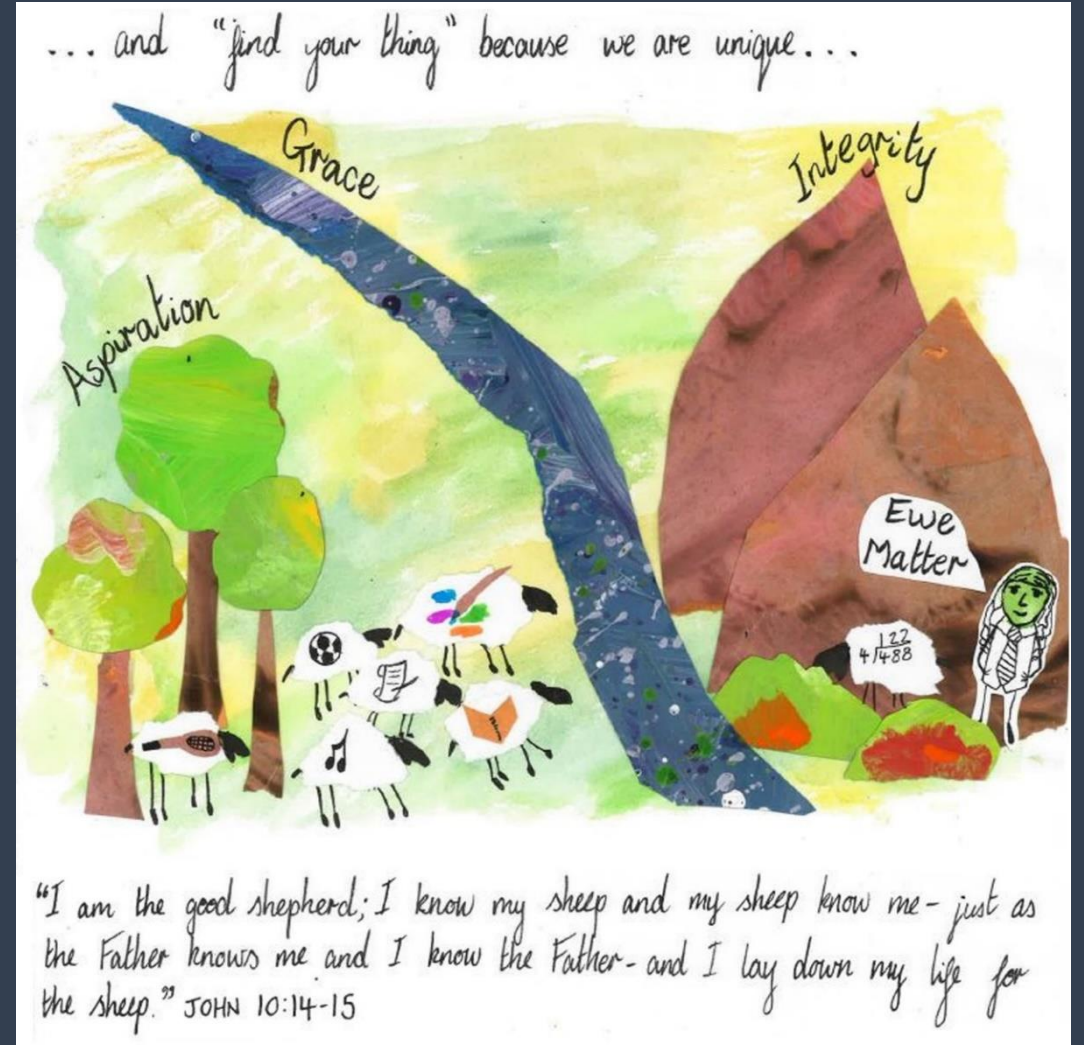
of children and young people in the UK meet the Chief Medical Officer guidelines of recommended 60 minutes of physical activity per day

30 minutes  
school  
30 minutes  
home  
  
every day

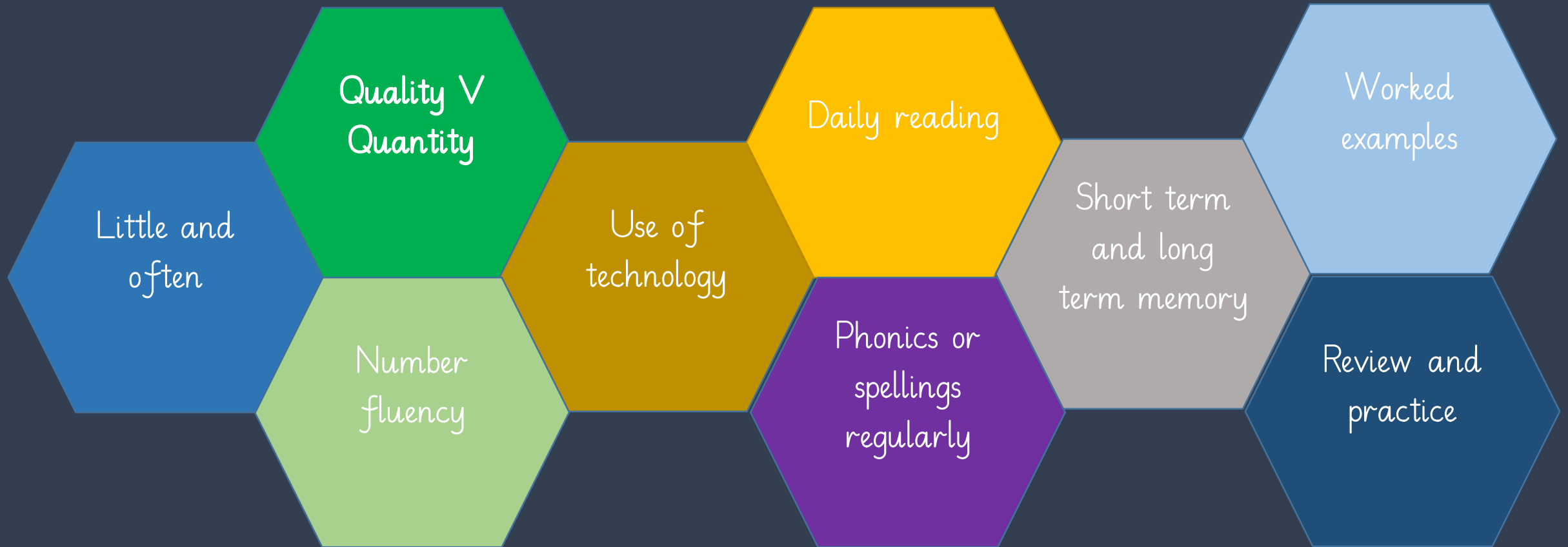
**Physical literacy**  
**is our relationship**  
**with movement**  
**and physical activity**  
**throughout life.**

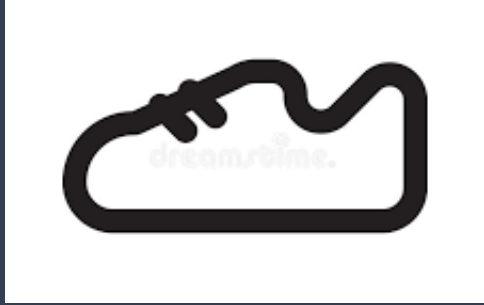
how we think,  
feel, move,  
connect, enjoy,  
value...

the action,  
activity,  
outcome

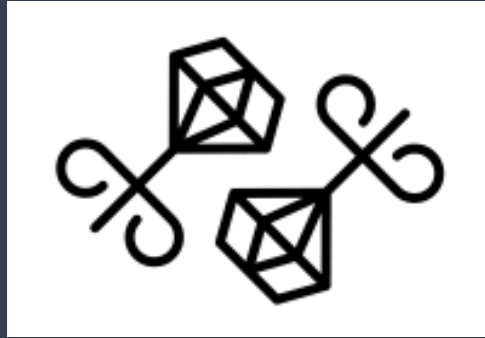


# Home Learning (not Homework!)





We have a big supply of spare black shoes in all sizes for temporary use.



We are a no earring school – please support us with this.



Do not park on double yellow lines or over driveways. Respect our neighbours and keep our children safe.



Please don't post about classroom/playground/teacher/child issues on your groups.

# Positive Partnership – thank you

Teachers can see you after school – you can come on to the playground once the class has been dismissed (or email for an appointment).



Some of our children have a fear of dogs – please keep your dog well away from fences and gates.





# Attendance

We work effectively with families to ensure regular attendance.

Regular attendance enables children to develop excellent relationships and flourish at school.

Working closely with BCP, in line with local schools, to ensure that we are following the new attendance guidance - further will be issued shortly.

Any concerns or questions about attendance speak to class teacher or Mrs Burton.



# FSK

**Total money funded 2023-24:**  
**£20,230**



**Resurfacing  
Playtrail**  
**£19,273**



1. The Diverse Birdwatching Hut ☐
2. The Nature Hide ☒ **290x**
3. The Birdwatch Hide ☐

Urgently needed for events to run:

- Volunteers for each event
- FSK champions

